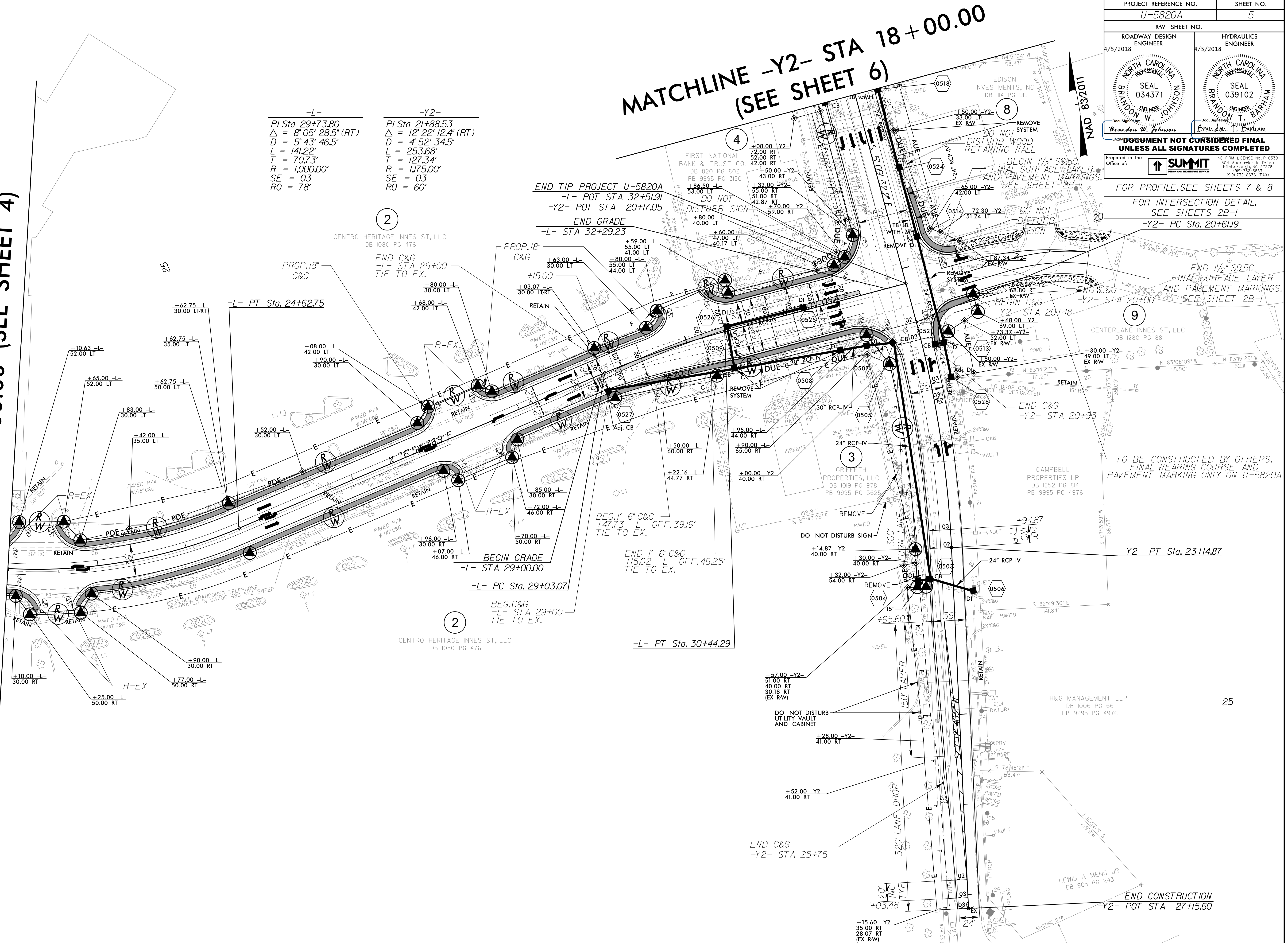


REVISIONS

05-APR-2018 13:58
U5820A_Rcy_pah_5.dgn
catlab@ncs.com

MATCHLINE -L- STA 22+00.00 (SEE SHEET 4)



-L-	-Y2-
PI Sta 29+73.80	PI Sta 21+88.53
$\Delta = 8' 05' 28.5''$ (RT)	$\Delta = 12' 22' 12.4''$ (RT)
D = 5' 43' 46.5"	D = 4' 52' 34.5"
L = 141.22'	L = 253.68'
T = 70.73'	T = 127.34'
R = 1,000.00'	R = 1,175.00'
SE = 03	SE = 03
RO = 78'	RO = 60'

MATCHLINE -Y2- STA 18+00.00
(SEE SHEET 6)

PROJECT REFERENCE NO. U-5820A	SHEET NO. 5
RW SHEET NO.	
ROADWAY DESIGN ENGINEER 4/5/2018	HYDRAULICS ENGINEER 4/5/2018
DOCUMENT NOT CONSIDERED FINAL UNLESS ALL SIGNATURES COMPLETED	
Prepared in the Office of:	
FOR PROFILE, SEE SHEETS 7 & 8 FOR INTERSECTION DETAIL, SEE SHEETS 2B-1 -Y2- PC Sta. 20+61.9	

MATCHLINE -L- STA 22+00.00 (SEE SHEET 4)

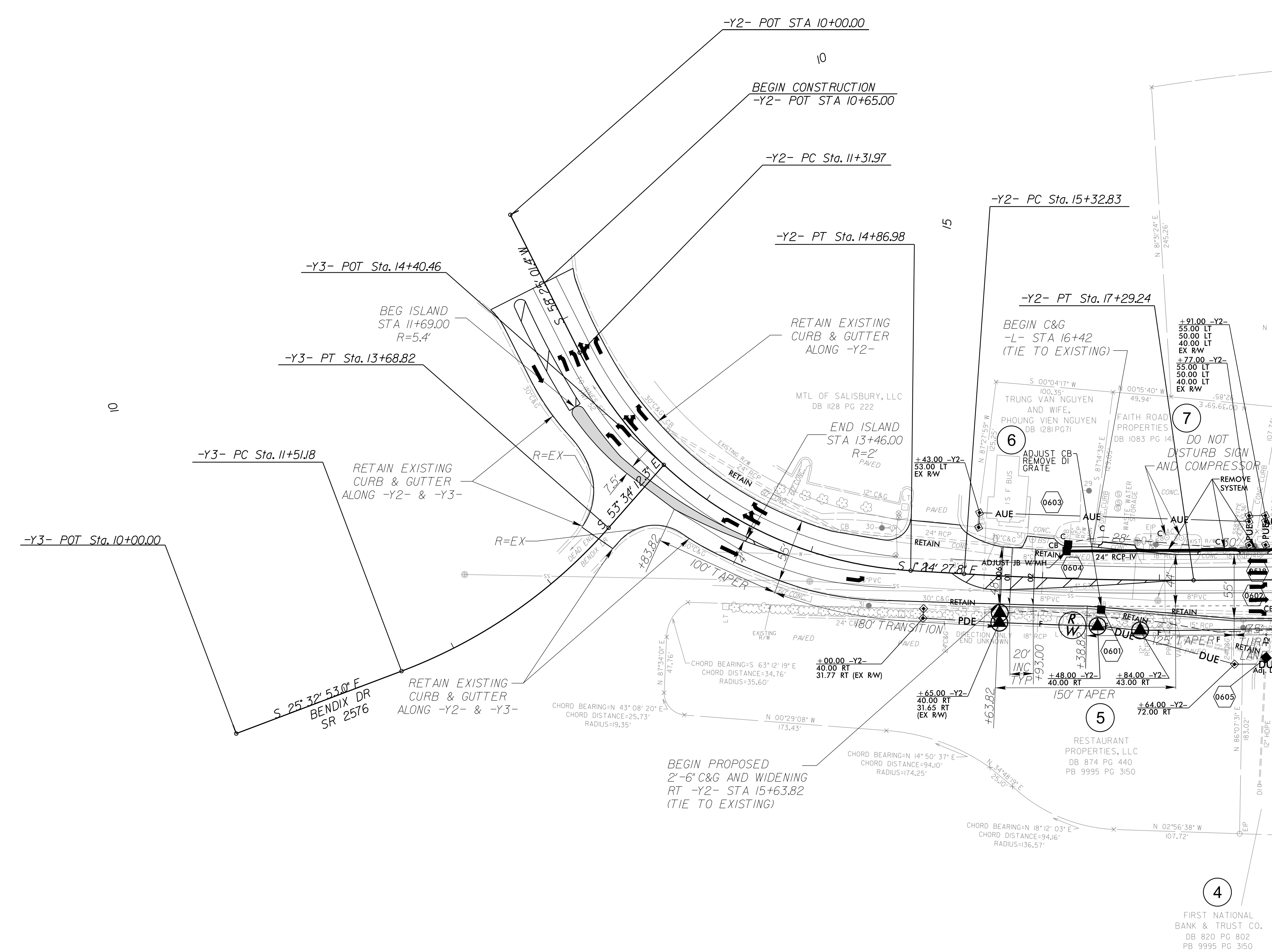
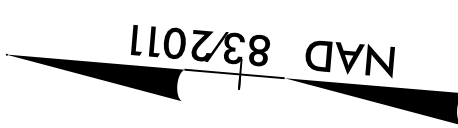
FOR PROFILE, SEE SHEETS 7 & 8
FOR INTERSECTION DETAIL, SEE SHEETS 2B-1
-Y2- PC Sta. 20+61.9

TO BE CONSTRUCTED BY OTHERS. FINAL WEARING COURSE AND PAVEMENT MARKING ONLY ON U-5820A

END CONSTRUCTION
-Y2- POT STA 27+15.60

PROJECT REFERENCE NO. U-5820A	SHEET NO. 6
RW SHEET NO.	
ROADWAY DESIGN ENGINEER 4/5/2018	HYDRAULICS ENGINEER 4/5/2018
<p>DOCUMENT NOT CONSIDERED FINAL UNLESS ALL SIGNATURES COMPLETED</p> <p>Prepared in the Office of: </p> <p>FOR PROFILE, SEE SHEET 8</p>	

<p>-Y3-</p> <p>PI Sta 12+62.22 $\Delta = 28^{\circ} 01' 19.3" (LT)$ $D = 12' 52' 31.6"$ $L = 217.64'$ $T = 111.04'$ $R = 445.00'$ SE = EXISTING RO = EXISTING</p>	<p>-Y2-</p> <p>PI Sta 13+27.58 $\Delta = 59^{\circ} 49' 29.2" (LT)$ $D = 16' 51' 06.1"$ $L = 355.01'$ $T = 195.61'$ $R = 340.00'$ SE = EXISTING RO = EXISTING</p>	<p>-Y2-</p> <p>PI Sta 16+31.07 $\Delta = 3^{\circ} 45' 04.4" (LT)$ $D = 1' 54' 35.5"$ $L = 196.41'$ $T = 98.24'$ $R = 3,000.00'$ SE = EXISTING RO = EXISTING</p>
--	--	---



MATCHLINE -Y2- STA 18+00.00
(SEE SHEET 5)

REVISIONS